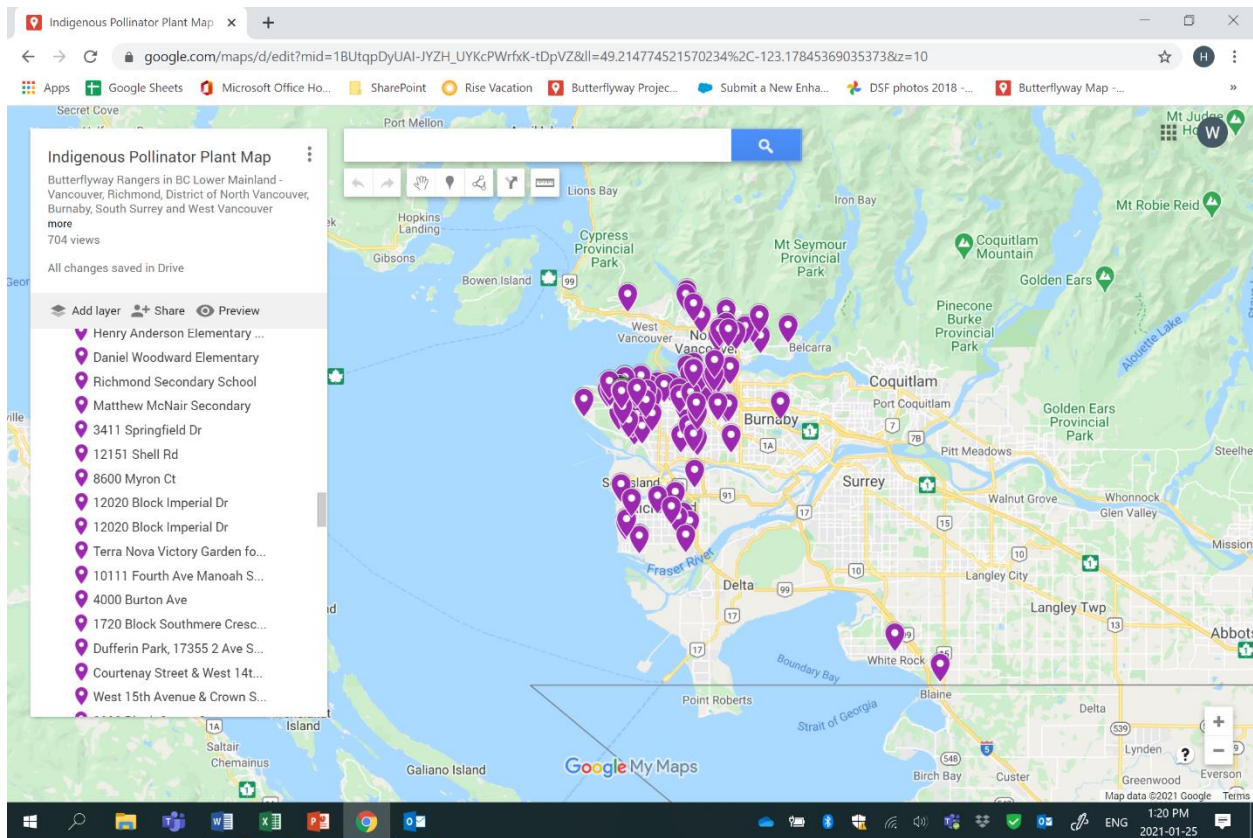


# The Butterflyway Project

## Request for participation – Musqueam artist for Indigenous pollinator plant map

As Butterflyway Rangers celebrate the 2020 Nature Inspiration Award presented by the Canadian Museum of Nature, Rangers in B.C. are looking forward to inspiration from the work of a Musqueam artist, thanks to a partnership between the Butterflyway Project and the Musqueam Indian Band.

The David Suzuki Foundation's Butterflyway Project is working with the Musqueam Indian Band to commission a Musqueam artist to create its first Indigenous pollinator plant map, based on the 163 plantings of native species by Butterflyway Rangers in the Lower Mainland.



**This is an invitation to Musqueam artists** to submit their interest in creating this IPPM. Expressions of interest should not exceed **\$2,500 for salary (all inclusive.)**

The artistic rendition of the IPPM will be a poster-size Musqueam First Nation–themed interpretation of Butterflyway Rangers’ plantings across the Lower Mainland.

It will reflect the 163 plantings shown on the Google map.

[https://www.google.com/maps/d/edit?mid=1BUtqpDyUAI-JYZH\\_UYKcPWrfxK-tDpVZ&usp=sharing](https://www.google.com/maps/d/edit?mid=1BUtqpDyUAI-JYZH_UYKcPWrfxK-tDpVZ&usp=sharing)

Plants include common camas, Oregon grape, nodding onion, goat’s beard, Pacific bleeding heart, western yarrow, Douglas aster, pearly everlasting, salal, hardhack, ocean spray and coastal kinnikinnick. The IPPM will also depict common butterflies that frequent Musqueam traditional territory.

A panel of representatives from the David Suzuki Foundation and the Musqueam Indian Band will select the winning artist.

The David Suzuki Foundation will own the final artist-rendered map as a part of the Butterflyway Project. The Musqueam artist’s IPPM will be shared with Butterflyway Rangers and the public for educational and public engagement purposes, to raise awareness and interest in Indigenous pollinator plants and traditional stories.

**Deadline for submission is June 11, 2021.**

**Please include:**

1. Your name and age
2. Two samples of your work
3. A short description (maximum 300 words) of your IPPM idea

Please contact **Delaney Beaton** [dbeaton@davidsuzuki.org](mailto:dbeaton@davidsuzuki.org) or **Winnie Hwo** [Winnie@davidsuzuki.org](mailto:Winnie@davidsuzuki.org) if you have questions about the IPPM submission.

**Submissions** should be sent to **Winnie Hwo** [winnie@davidsuzuki.org](mailto:winnie@davidsuzuki.org) , BC Project Lead, Butterflyway Project.

**Physical copies/submissions** can be dropped off to:

Musqueam Band Office

6735 Salish Drive

Vancouver, BC.

Attention: Protocol & Communications RE: The Butterflyway Project

**ALL SKILL LEVELS ENCOURAGED TO APPLY!**

## **Appendix A:**

### **Who are Butterflyway Rangers?**

The David Suzuki Foundation's national Butterflyway Project empowers people where they live and builds long-lasting relationships with communities to protect nature. It began recruiting and training volunteer Butterflyway Rangers to plant and preserve natural habitat for butterflies and other wild pollinators — especially in urban areas — in 2017.

There are currently more than 200 Butterflyway Rangers in B.C.'s Lower Mainland. In 2020, they collectively created 163 plots of native pollinator plants in Vancouver, Richmond, the District of North Vancouver, Burnaby, West Vancouver and South Surrey. These appear as the Indigenous pollinator plant map on Google:

[https://www.google.com/maps/d/edit?mid=1BUtqpDyUAI-JYZH\\_UYKcPWrfxK-tDpVZ&usp=sharing](https://www.google.com/maps/d/edit?mid=1BUtqpDyUAI-JYZH_UYKcPWrfxK-tDpVZ&usp=sharing)

In 2020, the Butterflyway Project won the Canadian Museum of Nature's Nature Inspiration Award.

## **Appendix B:**

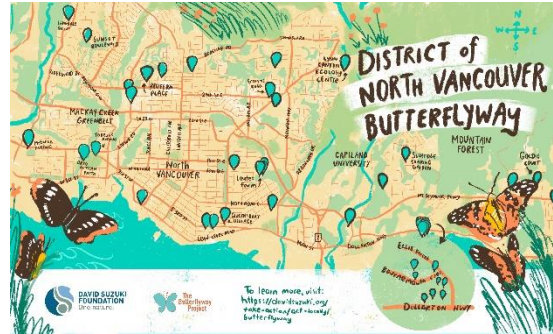
### **What is the Indigenous pollinator plant map?**

The IPPM initiative is distinct to B.C. Butterflyway Rangers. It's guided by a committee (Vancouver Butterflyway Rangers Carol Both, Lori Snyder from Moberly Arts and Cultural Centre and Selina Pope from Riley Park; and Anne-Marie Fenn from Anderson Elementary in Richmond) that helps Rangers plant native species to create habitat for wild pollinators and ensures these plantings help connect Rangers, the public and Indigenous communities. The committee hopes to receive guidance from the x̣ẉṃə̣θ̣ḳẉə̣ỵəṃ people on the 2020-21 IPPM.

## **Appendix C:**

## Butterflyway Maps

In the past, the Butterflyway Project commissioned Toronto artist Sarah Lazarovic to produce city-based Butterflyway maps for Vancouver, Richmond and the District of North Vancouver:



The Musqueam-themed IPPM will be the first Indigenous pollinator plant map. It will also be the first to showcase Butterflyway Rangers' plantings in all three of the above cities, plus Burnaby, South Surrey and West Vancouver.