

Broadway Subway Project Art and Cultural Recognition Program
CALL FOR xʷməθkʷəy̍əm ARTISTS

Opportunity 2: 2D Integrated Artwork – Glass Artwork

Initial Submission (Request for Qualifications) deadline: October 14, 2022

PROJECT DESCRIPTION:

The Broadway Subway Project (the Project) is an approximately 5.7 km extension of the Millennium Line from VCC-Clark Station to a new terminus at Broadway and Arbutus Street. The Project is located within the ancestral and unceded territories of Musqueam Indian Band, Squamish Nation, and Tsleil-Waututh Nation. It will provide fast, frequent and convenient SkyTrain service to the Broadway Corridor, serving B.C.'s second largest jobs centre, world-class health services, emerging innovation and research hub, and growing residential communities. The Project is a key part of the rapid transit program in Metro Vancouver's Mayors' Council 10-Year Vision, which is funded by the governments of B.C. and Canada, TransLink, and the City of Vancouver.

Transportation Investment Corporation (TI Corp), a provisional Crown corporation, is delivering and overseeing this \$2.827 billion project. The Broadway Subway Project is being built using a Community Benefits Agreement to help employ Indigenous people, local residents, women, and others traditionally underrepresented in the trades, and to increase B.C.'s skilled and diverse workforce.

Broadway Subway Project Corporation (BSPC) has been selected as the design-build contractor. The Broadway Subway Project is scheduled to open in 2025. Once in service, the Broadway Subway Project will be integrated with the regional transit network and operated and maintained by TransLink. For more information on the Broadway Subway Project, please visit www.broadwaysubway.ca.

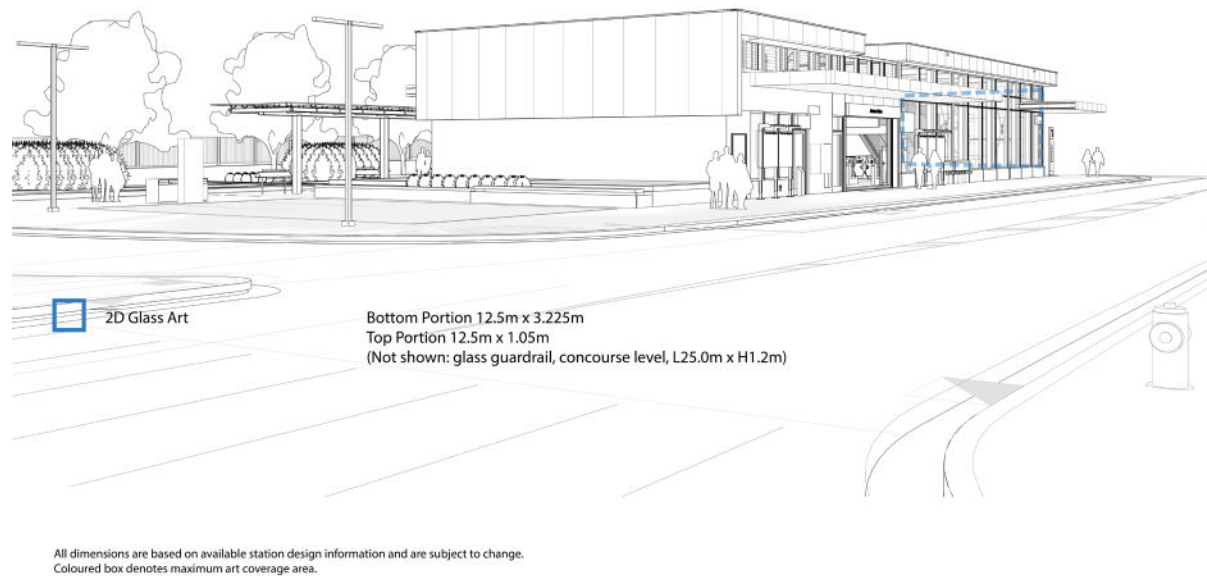
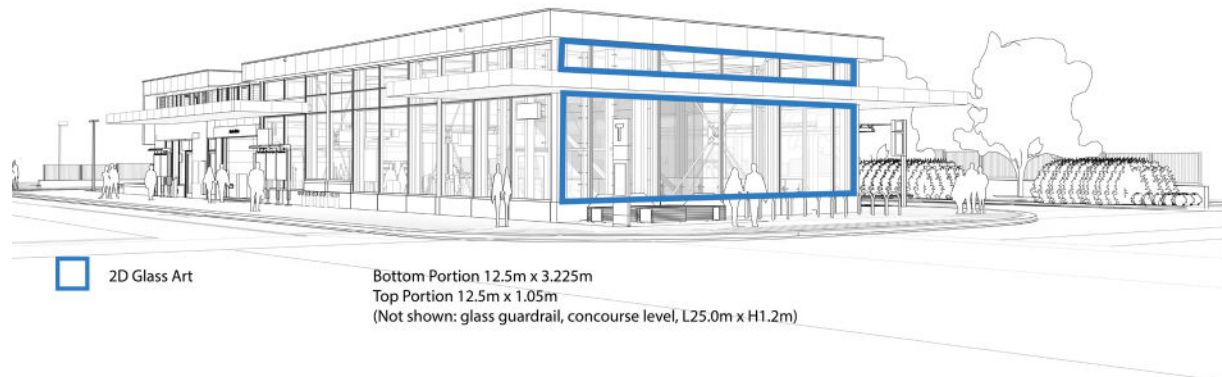
This Call for Artists is one of four art and cultural recognition opportunities at the Arbutus station, all of which will be Musqueam-led. In addition to these four opportunities, there will be further art and cultural recognition opportunities available to Musqueam artists at later stages of the Project.



OPPORTUNITY:

Musqueam and TI Corp are seeking to commission a Musqueam artist or artist team to create a highly integrated artwork for the Arbutus Station, which is one of the six new underground stations being constructed as part of the Broadway Subway Project. The artwork will replace a portion of the station head

house exterior glazing and the guardrail on the concourse level. This is one of four Musqueam artworks that will be featured at Arbutus Station.



Youth and emerging artists are encouraged to work with established artists on joint submissions or as a member of an artist team.

DESIGN GUIDELINES:

The artwork should consider the following:

- Celebrate, recognize, and give space to Musqueam, on whose ancestral territory the artwork is to be located;
- Spark awareness to the community of traditional Musqueam territory and culture;
- Reflect Musqueam design and imagery;
- Fire safety and non-combustibility;
- Safety and security, with consideration for the need to maintain uninterrupted transit circulation and sightlines;
- Potential impacts to the station structure including structural loads, mounting, suspension and anchorage design, and how these elements affect the overall appearance of the artwork; and
- Suitability of material use, fabrication methods and installation requirements, including the need for maintenance, operation and adjustment.

The artwork should also meet the following technical criteria:

- Be robust and durable. The artwork and its associated components, systems and attachment shall be able to withstand the test of time, the elements, and potential interaction of a large number of transit users;
- Not require ongoing readjustments or extraordinary maintenance (see Life Expectancy of Artwork);
- Meet public safety, security and maintenance standards; and
- Not create negative interactions with persons with disabilities, including people with visual impairments.

Detailed design parameters and technical criteria will be provided to the artist(s) or artist teams during the concept design stage to ensure design proposals meet safety, operation and maintenance standards.

LIFE EXPECTANCY OF ARTWORK:

The minimum life expectancy of the artwork, and all systems, attachments and anchorage associated with the artwork is ten (10) years; however, it is expected that many artworks will be on display for at least 25 to 30 years.

The artwork should withstand the test of time and should not require ongoing readjustments and extraordinary maintenance. The artwork is expected to require little maintenance during its lifespan other than annual cleaning performed by a third-party.

The successful artist or artist team will be responsible for submitting a written maintenance plan for their artwork, which will be carried out by TransLink. This maintenance plan will need to outline how the artwork is to be cleaned and maintained over its lifespan.

CRIME PREVENTION THROUGH ENVIRONMENTAL DESIGN:

Crime Prevention Through Environmental Design (CPTED) is defined as a multi-disciplinary approach for reducing crime through urban and environmental design. CPTED strategies have been applied throughout the Broadway Subway Project with the aim to reduce victimization, deter offender decisions that precede criminal acts, and reduce opportunities for crime and fear of crime.

CPTED considerations – including sightlines, safety and security of the artwork, interaction with lighting, etc., must be addressed in the artwork and should use a common-sense approach, as well as adhering to the safety requirements by TransLink and recommendations by the Broadway Subway Project team.

Artists and artist teams are expected to work closely with the Broadway Subway Project team to address CPTED issues during the concept and design development of the artwork.

BUDGET:

The total contract value for this art opportunity is **\$296,000 (CAD)**. The budget is exclusive of GST and inclusive of all costs listed below:

- Artist fee (research, concept development, renderings and other visual communication materials, presentation, project meetings and coordination with Broadway Subway Project Corporation);
- Studio overhead;
- Administrative expenses;
- Insurance;
- Consultant and engineering fee (artwork only);
- Travel expenses;
- Prototyping;
- Artwork materials and fabrication;
- Shipping to station or designated storage site;
- On site supervision during installation;
- Professional photographic documentation;
- Maintenance manual expenses;
- 15% contingency (recommended; will be applied to the artwork if not used); and
- PST, if applicable.

The artist or artist team's budget does not include installation and installation-related permitting and engineering costs. BSPC will be responsible for installation of the artwork at the station, including supply and installation of all attachments, brackets and mounting frames as needed to receive and support the artwork at the station. Artists and artist teams are expected to collaborate closely and rigorously with BSPC to ensure successful station-artwork integration and are required to provide on-site supervision during the installation of the artwork.

The artist budget does not include temporary storage of the artwork between the date of delivery of the artwork to the site and installation. BSPC will coordinate with the artist or artist team on the schedule for delivery of the artwork. For artwork delivered to the stations but not installed on the date of the delivery, BSPC will be responsible for the safe and secure storage of the artwork.

TIMELINE:

September 22, 2022	Announcement of Artist Call
October 7, 2022	Deadline to submit preliminary clarification questions
October 14, 2022	DEADLINE FOR REQUEST FOR QUALIFICATIONS SUBMISSIONS
October 21, 2022	Shortlisted artists notified (three artists or artist teams will be shortlisted)
OCTOBER 2022	Shortlisted artists or artist teams to attend a Project Orientation meeting
November 23, 2022	DEADLINE FOR CONCEPT PROPOSAL SUBMISSIONS
NOVEMBER 2022	Shortlisted artists presentations
DECEMBER 2022	Selected artist or artist team notified

****Please note that extensions cannot be accommodated due to the Broadway Subway Project construction schedule. The ability to work within the timelines noted above will be considered in the artist selection process.***

SUBMISSION REQUIREMENTS:

This Call for Artists has been prepared to solicit responses from Musqueam artists. An individual Musqueam artist or collective of Musqueam artists may submit a proposal. Artists may respond to multiple Broadway Subway Project artist calls concurrently.

Musqueam artists interested in this opportunity must prepare and submit an electronic application in one (1) pdf file no larger than ten (10) MB. The following format, sequence, and instructions should be followed in order to provide consistency in the artist's or artist teams' response and ensure each response receives full consideration. All pages should be consecutively numbered and organized into the following labeled sections:

- **Cover Letter**, that includes (maximum 1 page):
 - Name;
 - Address;
 - Contact information (email and phone number);
 - Website (if applicable); and
 - Date.
- **Letter of Interest** (maximum 1 page): Describes the artist's or artist teams' conceptual approach for this opportunity (if submitting as a team, the letter should include a description of how the team works together and any previous collaborative work experience);
- **Resume**: If applying as an artist team, please provide one for each artist;
- **Sample of Past Work** (maximum 10 images): Please include the title of the artwork, medium(s), date of completion, dimensions, artwork location and commissioning body. Please provide a brief description of the artworks; and
- **References**: Name and contact information of two (2) reference persons with whom the artist has worked with in the past and are familiar with the artist's work and practice.

ARTIST SELECTION PROCESS:

Artists or artist teams are selected based on a two-stage selection process:

- Stage 1: Request for Qualifications (RFQ) Open Call; and
- Stage 2: Project Orientation and Concept Proposal Presentation.

Stage 1:

Once all submissions are received, a Musqueam selection panel will shortlist three (3) artists or artist teams based on the following criteria:

- Creative style: high quality, innovation, and creativity of artwork design as evident in past projects;
- Artist's conceptual approach: as described in the letter of interest;
- Project fit: understanding of the opportunity and Musqueam heritage;
- Technical skills: ability to deliver project from concept to installation;
- Artist's experience: able to work collaboratively with professional contractors and project team members, as evident in past experience and references; and
- Availability: artist's or artist team's commitment to attend an orientation session on date determined by the Broadway Subway Project team and, after contract is awarded, to attend collaborative meetings with the Broadway Subway Project team throughout the course of the project to ensure successful integration of the artwork at the station.

The three shortlisted artists or artist teams will receive an honorarium of \$1,500 (CAD) for the preparation of a concept design proposal in Stage 2 of the Artist Selection Process. (The amount will be \$1,500 (CAD) whether it is a single artist or an artist team, the amount is not per person on artist teams).

Stage 2

The three shortlisted artists or artist teams will have approximately one month to develop a concept and maquette presentation. During this time, the Project team will be available to answer questions (e.g. regarding technical feasibility). Each shortlisted artist or team will present their design concept to the Musqueam selection panel, who will then select the artist or team based on the criteria above. A representative from the Broadway Subway Project team will be available to the selection panel to provide technical input, but the final decision will be made by the Musqueam selection panel.

DETAILED DESIGN AND PAYMENT SCHEDULE:

Detailed design of the artwork will follow a rigorous progress submission schedule that corresponds to the progress of station design. The submission milestones and progress payment schedule will be discussed with the artist or artist team and determined on a case-by-case basis and will be included as part of the artist contract.